

# Meet Your Crump Team

**SALES WHOLESALERS** can assist you with information on available products



**Maria Cuevas**  
Wholesaler  
West / Central West Zone  
213.337.3158  
[maria.cuevas@crump.com](mailto:maria.cuevas@crump.com)



**Drew Newcomer**  
Wholesaler  
East / Central East Zone  
717.210.1834  
[drew.newcomer@crump.com](mailto:drew.newcomer@crump.com)

## LIFE SALES SUPPORT TEAM

Call for assistance with all carrier/product information, illustrations and case design.  
888.770.2155, options 3, 2, 1 | [HBSalesSupport@Crump.com](mailto:HBSalesSupport@Crump.com).

**NEW BUSINESS ASSOCIATES** are responsible for your case from beginning to end  
**Fully Underwritten and Simplified Issue**



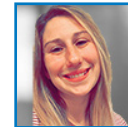
**Jennifer Hayes**  
Life Case Manager  
717.526.7333  
[jennifer.hayes@crump.com](mailto:jennifer.hayes@crump.com)



**Angie Lansinger**  
Life Case Manager  
631.214.5927  
[angela.lansinger@crump.com](mailto:angela.lansinger@crump.com)



**Nancy Mohn**  
Life Case Manager  
717.736.7860  
[nancy.mohn@crump.com](mailto:nancy.mohn@crump.com)



**Emily Morgan**  
Life Case Manager  
717.526.7358  
[emily.morgan@crump.com](mailto:emily.morgan@crump.com)



**Carolyn Roberts**  
Life Case Manager  
631.861.2446  
[carolyn.roberts@crump.com](mailto:carolyn.roberts@crump.com)



**Tiffany Streater**  
Life Case Manager  
717.526.7300  
[tiffany.streater@crump.com](mailto:tiffany.streater@crump.com)



**Melinda Chapman**  
Life Case Manager  
717.736.8158  
[melinda.chapman@crump.com](mailto:melinda.chapman@crump.com)

## Guaranteed Issue

## Supervisors



**Victoria Miggins**  
Life New Business  
Supervisor  
717.214.5938  
[victoria.miggins@crump.com](mailto:victoria.miggins@crump.com)



**Maggie Daron**  
Life New Business  
Director  
717.736.8050  
[maggie.daron@crump.com](mailto:maggie.daron@crump.com)

**LIFE UNDERWRITERS** can assist you with your toughest cases



**Donna Nicholls**  
Underwriting Consultant  
732.369.5730  
[donna.nicholls@crump.com](mailto:donna.nicholls@crump.com)

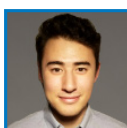


**Samantha Marotta**  
Underwriting Consultant  
717.736.7963  
[samantha.marotta@crump.com](mailto:samantha.marotta@crump.com)

**LTC & DI TEAM** can assist you with disability and long term care sales



**Susan Weiland**  
LTC Wholesaler  
410.559.2494  
[susan.weiland@crump.com](mailto:susan.weiland@crump.com)



**Jordan Bramhall**  
LTC Case Manager  
801.245.3379  
[jordan.bramhall@crump.com](mailto:jordan.bramhall@crump.com)

### LTC QUOTE REQUESTS

888.770.2155, option 3, option 1  
[lrcquotes2@crump.com](mailto:lrcquotes2@crump.com)  
Fax: 800.394.3297



**Melissa Ferry**  
Internal DI Wholesaler  
717.526.7311  
[melissa.ferry@crump.com](mailto:melissa.ferry@crump.com)



**Stacy Behrmann**  
DI Case Manager  
801.533.7827  
[stacy.behrmann@crump.com](mailto:stacy.behrmann@crump.com)

### DI QUOTE REQUESTS

888.770.2155, option 3  
[disupportcenter@crump.com](mailto:disupportcenter@crump.com)  
Fax: 888.584.9073



**Contact Your Crump Team Today! 888.770.2155, Option 3**

[www.allstate.crumplifeinsurance.com](http://www.allstate.crumplifeinsurance.com) • Email: [firstname.lastname@crump.com](mailto:firstname.lastname@crump.com)

For Financial Professional Use Only. Not intended for use in solicitation of sales to the public. Not intended to recommend the use of any product or strategy for any particular client or class of clients. For use with non registered products only. Crump operates under the license of Crump Life Insurance Services, Inc., AR license #100103477. Products and programs offered through Crump are not approved for use in all states. Thank you for your business. 0119 NACC18-6259-A-15 0919 Copyright © 2021 Crump Life Insurance Services, Inc.